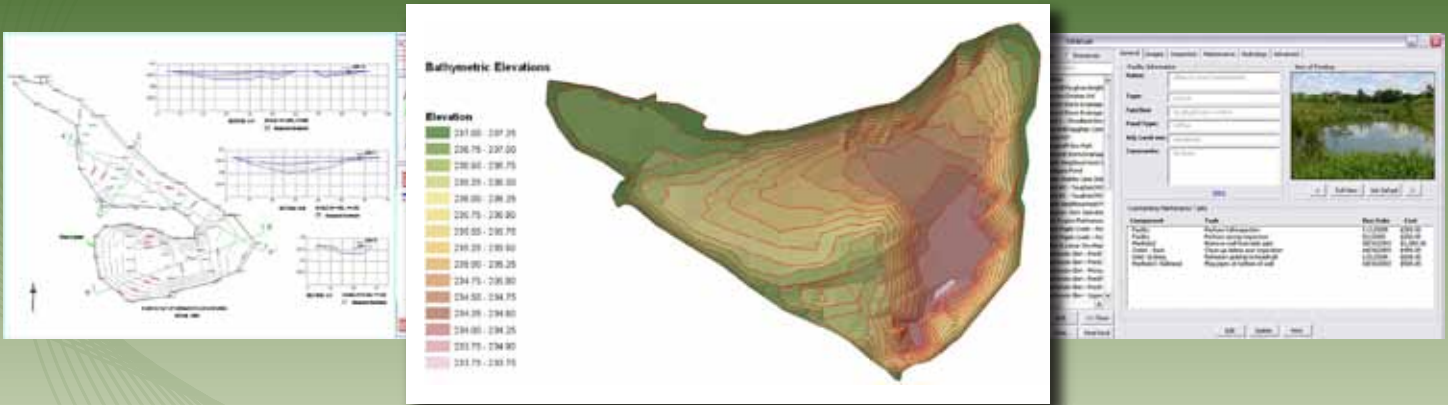


# SWM Facility Operations & Maintenance



Owners are responsible for the long-term operation and maintenance of their urban Stormwater Management (SWM) facilities. This includes ensuring that water quality and quantity functions perform according to the original design specifications and the Ministry of the Environment Certificate of Approval.

Our expert services include:

- Developing a comprehensive Storm Water Management Pond Operation and Maintenance Master Plans, including component inventory, condition assessment, forecasting future maintenance, cost estimating, resource allocation, photographic records, etc.
- Detailed and thorough field investigations, organization of compilation of all the information into a GIS database using the GIS-based management software (SWMSoft™).
- Hydrologic and water quality analysis and forecast of future maintenance.
- Generating detailed design drawings and specifications.
- Developing budgets and resource allocation plans.
- Contract administration and construction inspection.
- Covering all due-dilligence requirements.

## SWMSoft™

- GIS System for managing the maintenance of facilities.
- Displays current and historical condition information.
- Has the ability to create maintenance tasks and budgets for maintenance activities.
- Incorporates design/as-built drawings, design briefs, etc.
- Makes use of SWMF modeling using SWMM 5 for forecasting sediment volumes and clean-out dates.